



INSTRUCTION BULLETIN

No. 9008626
Machine: T16
Published: 11-2016
Rev. 01

NOTE: DO NOT DISCARD the Parts List from the Instruction Bulletin. Place the Parts List in the appropriate place in the machine manual for future reference. Retaining the Parts List will make it easier to reorder individual parts and will save the cost of ordering an entire kit.

NOTE: Numbers in parenthesis () are reference numbers for parts listed in Bill of Materials.

Installation instructions for **kit number 9008067**

SYNOPSIS:

This kit contains the parts needed to install a rear squeegee guard kit on T16 scrubbers.
Please follow step-by-step instructions.

SPECIAL TOOLS / CONSIDERATIONS: NONE

(Estimated time to complete: 1 hour)



PROTECT THE ENVIRONMENT

Please dispose of packaging materials, old machine components, and hazardous fluids in an environmentally safe way according to local waste disposal regulations.

Always remember to recycle.

PREPARATION:

1. Completely empty both the solution tank and recovery tank. Refer to the Operators Manual for instructions how to empty the solution and recovery tanks.
2. Park the machine on a clean level surface, turn off the machine, and remove the key.

FOR SAFETY: Before leaving or servicing machine, stop on level surface, turn off machine, and remove key.

3. Remove the rear squeegee from the machine. Refer to the Operators Manual for instructions how to remove the rear squeegee. Set the rear squeegee aside.

INSTALLATION:

1. Remove the right tank support bracket and the left tank support bracket from the machine. Set the four M8 X 1.25 X 20 hex screws, the four M8 X 1.25 X 25, and all flat washers aside. Discard both brackets. (Fig. 1 / Fig. 2)

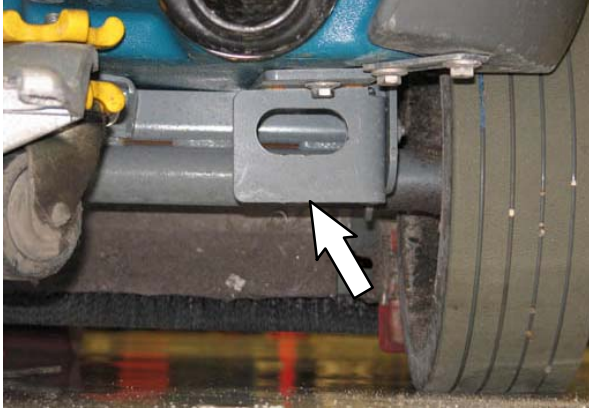


FIG. 1

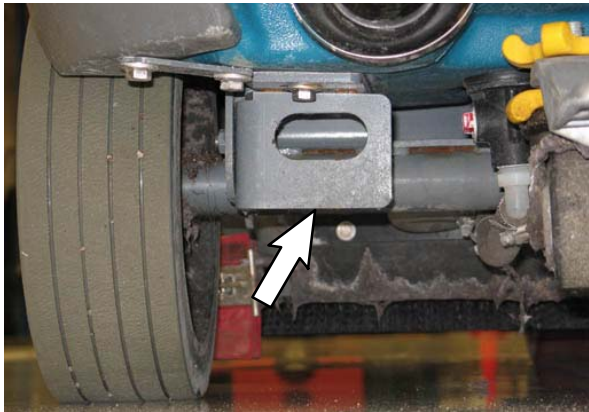


FIG. 2

2. Use two M8 X 1.25 X 20 hex screws and two flat washers removed in Step 1 to install one tank mounting bracket (3) onto the recovery tank where the right tank support bracket was previously installed. Do not completely tighten the hardware. Hardware is tightened during later adjustment. (Fig. 3)
3. Use two M8 X 1.25 X 20 hex screws and two flat washers removed in Step 1 to install one tank mounting bracket (3) onto the solution tank where the left tank support bracket was previously installed. Do not completely tighten the hardware. Hardware is tightened during later adjustment. (Fig. 3)
4. Use a hex screw (8) and a flat washer (9) to install a bumper (7) onto the right bumper channel (1) and left bumper channel (2). (Fig. 3)
5. Use two SEMS M8 hex screws (4) and the two M8 X 1.25 X 25 hex screws and flat washers removed in Step 1 to install the right bumper channel (1) onto the machine. Do not completely tighten the hardware. Hardware is tightened during later adjustment. (Fig. 3)
6. Use two SEMS M8 hex screws (4) and the two M8 X 1.25 X 25 hex screws and flat washers removed in Step 1 to install the left bumper channel (2) onto the machine. Do not completely tighten the hardware. Hardware is tightened during later adjustment. (Fig. 3)
7. Use two SEMS M8 hex screws (4), two flat washers (5), and two M8 hex nuts (6) to secure the tank mounting brackets (3) to the right bumper channel (1) and left bumper channel (2). Do not completely tighten the hardware. Hardware is tightened during later adjustment. (Fig. 3)

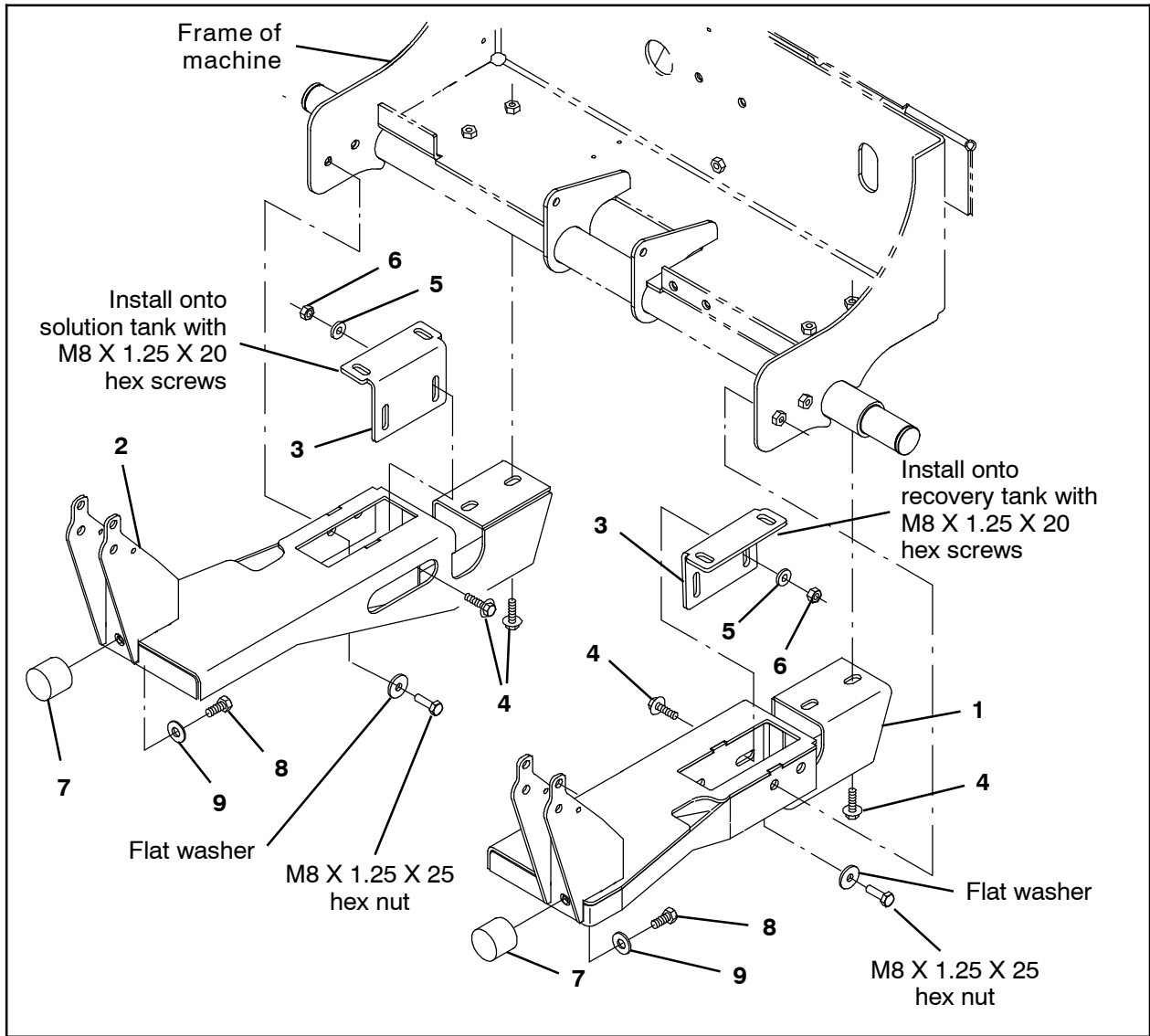


FIG. 3

8. Use two M10 hex screws (11), two flat washers (9), and two M10 hex nuts (12) to install the guard tube (10) onto the right bumper channel (1) and left bumper channel (2). (Fig. 5)
9. Tighten the SEMS M8 hex screws (4) holding the right bumper channel (1) and left bumper channel (2) to the bottom of the frame of the machine. (Fig. 3)
10. Tighten the M8 X 1.25 X 25 hex screws holding the right bumper channel (1) and left bumper channel (2) to the sides of frame of the machine. (Fig. 3)
11. Tighten the M8 X 1.25 X 20 hex screws to secure both tank mounting brackets (3) to the tanks. (Fig. 3)
12. Tighten the SEMS M8 hex screws (4) and M8 hex nuts (6) holding the tank mounting brackets (3) to the right bumper channel (1) and left bumper channel (2). (Fig. 3)
13. Install the hitch pin (13) onto the cable (14). (Fig. 5)
14. Use one M5 hex nut (15), one flat washer (16), and one M5 hex nut (17) to install the hitch pin (13) / cable (14) onto the right bumper channel (1). (Fig. 5)

15. Reinstall the rear squeegee onto the machine.
16. Use the hitch pin (13) to hold the guard tube (10) in the raised position when not using the rear squeegee guard. Store the pin in the holes in the right bumper channel (1) when using the rear squeegee guard. Do not leave the hitch pin (13) / cable (14) hanging loose when using the rear squeegee guard. (Fig. 4 / Fig. 5)



FIG. 4

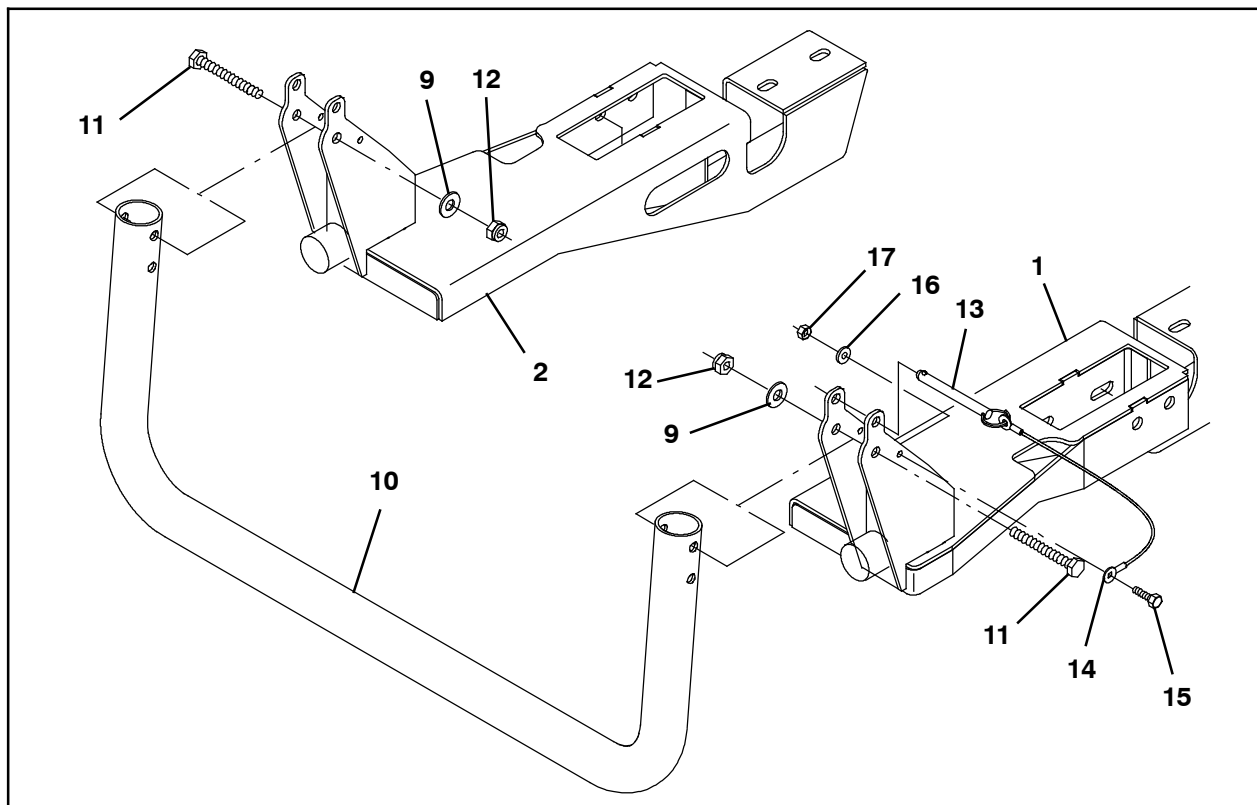


FIG. 5

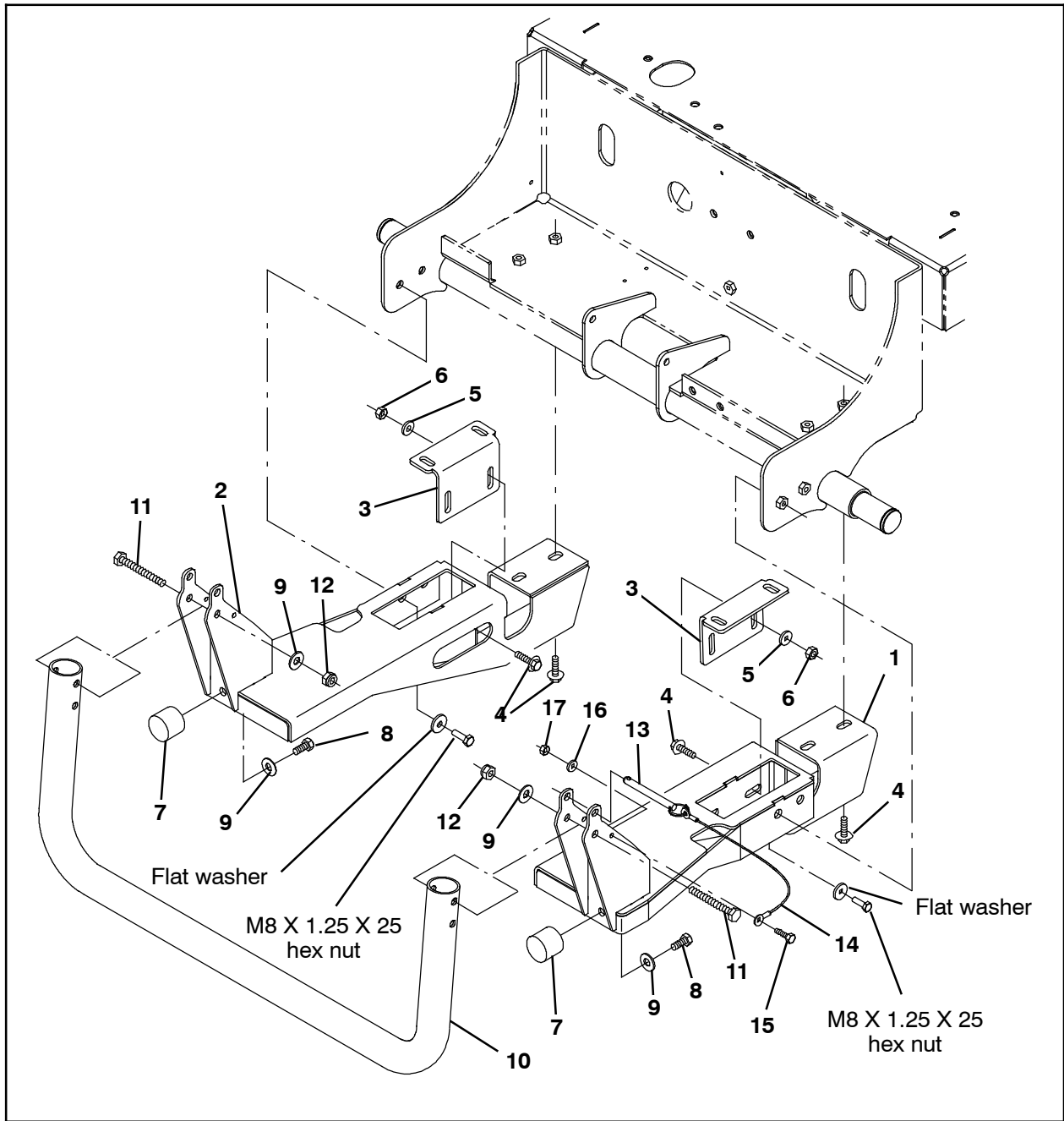


FIG. 6

Bill Of Materials For Guard Kit, Sqge, CI [T16] - 9008067

	Ref.	Tennant Part No.	Description	Qty.
▽		9008067	Guard Kit, Sqge, CI [T16]	1
▲	1	1055312	Channel Wldt, Bmpr, RH	1
▲	2	1055390	Channel Wldt, Bmpr, LH	1
▲	3	1055367	Bracket, Mtg, Tank	2
▲	4	1020341	Screw, Hex, M8 X 1.25 X 20, SS, SEMS	8
▲	5	01685	Washer, Flat, 0.38b 0.88d .08, SS	4
▲	6	08713	Nut, Hex, Lock, M8 X 1.25, NI, SS	4
▲	7	1024977	Bumper, Ure, 1.50d 1.25l	2
▲	8	1075285	Screw, Hex, .38- 16 X 0.88, SS	2
▲	9	32492	Washer, Flat, 0.38, Std	4
▲	10	1055320	Tube, Guard	1
▲	11	06965	Screw, Hex, M10 X 1.50 X 80, 8.8	2
▲	12	41430	Nut, Hex, Lock, M10 X 1.5, NI	2
▲	13	369359	Pin, Hitch, .375d X 3.12l, PI	1
▲	14	57702	Cable, Glv .06d 012.0l .26eye /.26eye	1
▲	15	09252	Screw, Hex, M5 X 0.80 X 20, 8.8	1
▲	16	01683	Washer, Flat, 10, SS	1
▲	17	09739	Nut, Hex, Lock, M5 X 0.80, NI, SS	1

TENNANT COMPANY
P. O. Box 1452
Minneapolis, MN 55440-1452